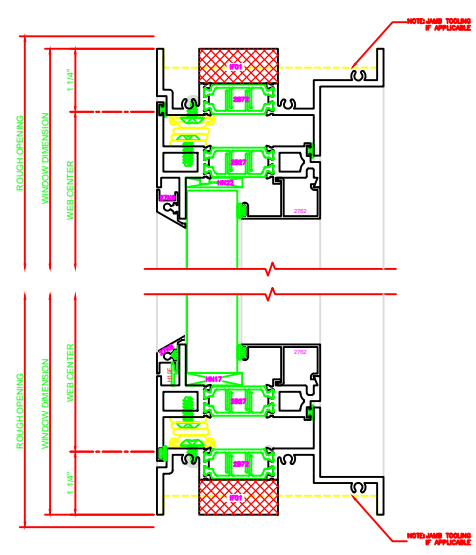
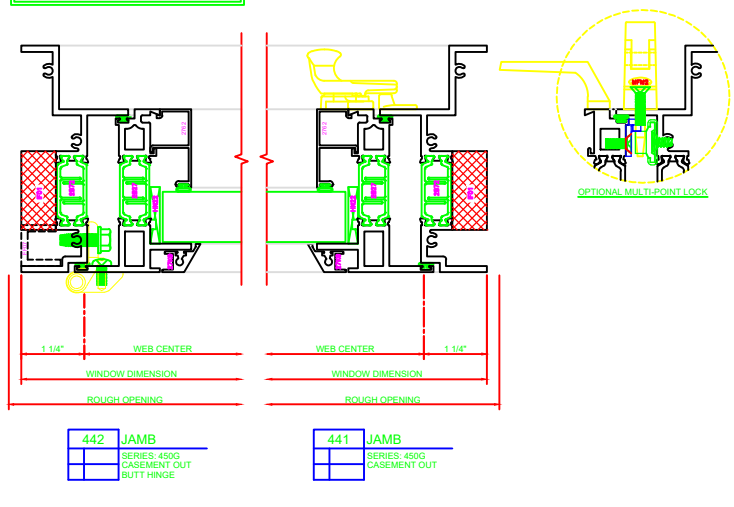


- |     |              |
|-----|--------------|
| 140 | HEAD         |
|     | SERIES: 450G |
|     | CASEMENT OUT |
|     | 4-BAR ARMS   |
- |     |              |
|-----|--------------|
| 240 | SILL         |
|     | SERIES: 450G |
|     | CASEMENT OUT |
|     | 4-BAR ARMS   |



## 4-BAR ARMS BUTT HINGE

**ERECTOR NOTE:**  
THE HINGED JAMB FRAME SHALL BE INSTALLED PLUMB. ALL HINGES SHALL BE SECURELY BLOCKED AND ANCHORED TO THE CONDITION THROUGH THE HINGES OR AS CLOSE AS POSSIBLE TO THE HINGES.



- |     |              |
|-----|--------------|
| 141 | HEAD         |
|     | SERIES: 450G |
|     | CASEMENT OUT |
|     | BUTT HINGE   |
- |     |              |
|-----|--------------|
| 241 | SILL         |
|     | SERIES: 450G |
|     | CASEMENT OUT |
|     | BUTT HINGE   |

